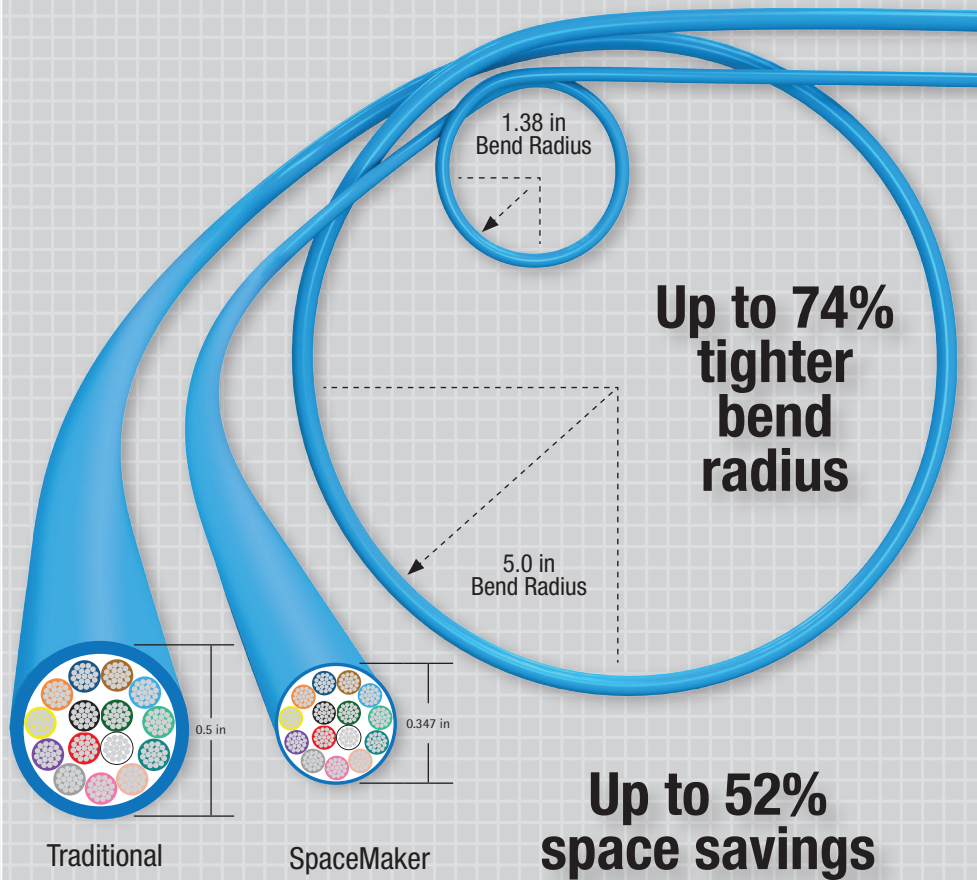
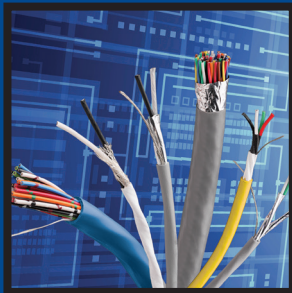
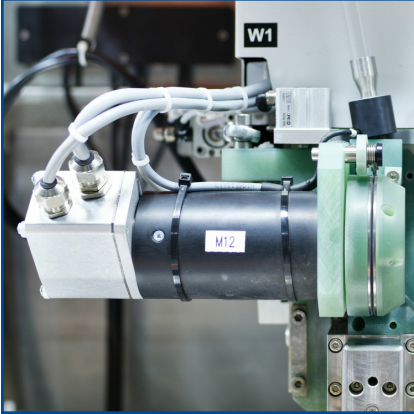


## SpaceMaker™ Series Electronic Cables



**Connect machines and devices in space constrained, harsh industrial settings with multi-use cables tailor-made for machine builders and device manufacturers' needs.**

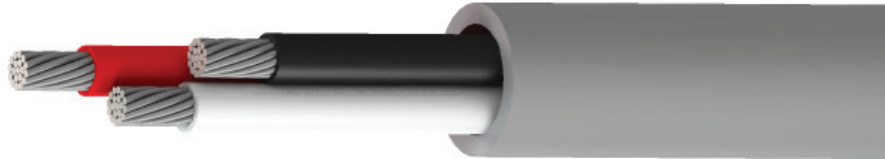
**Be certain.  
Belden.**



## Featuring Reduced Size with Increased Flexibility

- Up to 52% reduced cable area compared to industry standard electronic cables
- Up to 74% tighter bend radius compared to industry standard electronic cables
- Increased cable life with 1 million flex life cycles
- Increased flex life for use in moving environments
- Backed by Belden's 10-year industry leading warranty
- Suitable for use in NFPA 79 applications

## 300V SpaceMaker Series Electronic Cables



## Unshielded

Cable Specifications	
<b>Conductors</b>	Stranded Tinned Copper
<b>Insulation Material</b>	Polypropylene (PP)
<b>Insulation Thickness</b>	0.010 inch (0.254 mm)
<b>Shielding</b>	Unshielded
<b>Jacket</b>	Industrial-grade PVC
<b>Colors</b>	Intrinsically Safe Blue
	Yellow
	Gray
<b>Voltage Rating</b>	300V
<b>Temperature Range</b>	-20°C to +80°C
<b>Put-Ups</b>	100 feet (30.48 meters)
	1000 feet (304.8 meters)
<b>Drain Wire</b>	Yes
<b>Min. Bend Radius</b>	4x OD
<b>Flex Cycle Rating</b>	1 Million Flexes
<b>Approvals</b>	UL AWM Style 2937 (300 V 80C)
	UL AWM Style 10118 (300 V 80C)
	Insulated Conductors
	CSA FT2

Part No.	Conductors	Nominal OD		Min. Bend Radius	
		Inch	mm	Inch	mm
<b>18 AWG (41x34)</b>					
9740MN	2	0.166	4.22	0.664	16.87
8463MN	3	0.176	4.47	0.704	17.88
8465MN	5	0.213	5.41	0.852	21.64
8467MN	7	0.233	5.92	0.932	23.67
8469MN	9	0.275	6.99	1.100	27.94
8466MN	12	0.310	7.87	1.240	31.50
8468MN	15	0.347	8.81	1.388	35.26
<b>20 AWG (26x34)</b>					
8205MN	2	0.146	3.71	0.584	14.83
9443MN	3	0.155	3.94	0.620	15.75
9445MN	5	0.186	4.72	0.744	18.90
9439MN	7	0.203	5.16	0.812	20.62
9455MN	9	0.238	6.05	0.952	24.18
9457MN	12	0.269	6.83	1.076	27.33
9458MN	15	0.300	7.62	1.200	30.48
<b>22 AWG (19x34)</b>					
8442MN	2	0.132	3.35	0.528	13.41
8443MN	3	0.140	3.56	0.560	14.22
8445MN	5	0.167	4.24	0.668	16.97
9430MN	7	0.182	4.62	0.728	18.49
9423MN	9	0.213	5.41	0.852	21.64
8457MN	12	0.240	6.10	0.960	24.38
8458MN	15	0.267	6.78	1.068	27.13

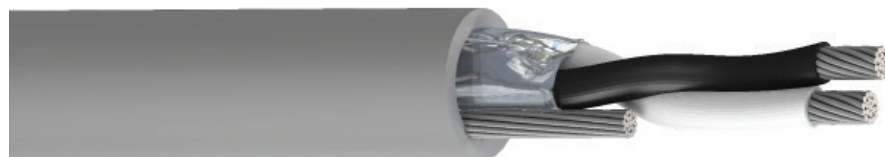
**Order a Sample Pack**  
[Belden.com/SpaceMaker](http://Belden.com/SpaceMaker)

## Enhancing Your System Design and Operations

- Run more cables in existing space or eliminate excess space from your designs
- Simplify installation by routing cables around tight corners or in hard to reach spaces more easily
- Reduce maintenance cost while protecting against downtime
- Maintain peace of mind even when your installation is exposed to liquids, extreme temperatures, abrasion, chemical exposure and heavy vibration



## 300V SpaceMaker Series Electronic Cables

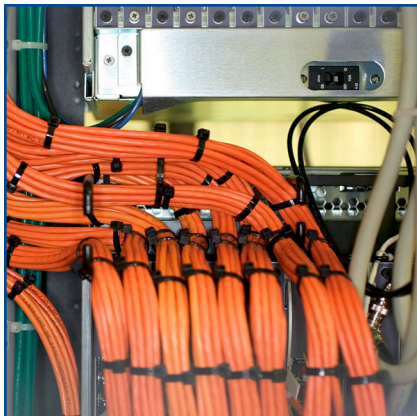


## Overall Foil Shield

Cable Specifications	
<b>Conductors</b>	Stranded Tinned Copper
<b>Insulation Material</b>	Polypropylene (PP)
<b>Insulation Thickness</b>	0.010 inch (0.254 mm)
<b>Shielding</b>	Overall Beldfoil® Shield (100% Coverage)
<b>Jacket</b>	Industrial-grade PVC
<b>Colors</b>	Intrinsically Safe Blue
	Yellow
	Gray
<b>Voltage Rating</b>	300V
<b>Temperature Range</b>	-20°C to +80°C
<b>Put-Ups</b>	100 feet (30.48 meters)
	1000 feet (304.8 meters)
<b>Drain Wire</b>	Yes
<b>Min. Bend Radius</b>	4x OD
<b>Flex Cycle Rating</b>	1 Million Flexes
<b>Approvals</b>	UL AWM Style 2937 (300 V 80C)
	UL AWM Style 10118 (300 V 80C) Insulated Conductors
	CSA FT2

**Order a Sample Pack**  
[Belden.com/SpaceMaker](http://Belden.com/SpaceMaker)

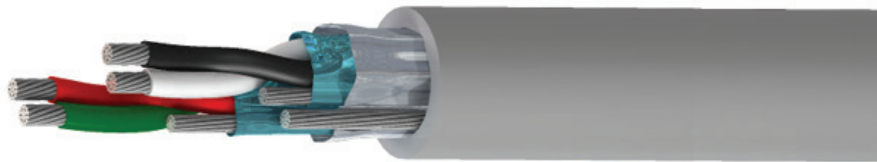
Part No.	Conductors	Nominal OD		Min. Bend Radius	
		Inch	mm	Inch	mm
<b>18 AWG (41x34)</b>					
<b>8760MN</b>	1 pair	0.169	4.29	0.676	17.17
<b>8770MN</b>	3	0.181	4.60	0.724	18.39
<b>8870MN</b>	5	0.217	5.51	0.868	22.05
<b>8871MN</b>	7	0.237	6.02	0.948	24.08
<b>8872MN</b>	9	0.279	7.09	1.116	28.35
<b>8873MN</b>	12	0.314	7.98	1.256	31.90
<b>8874MN</b>	15	0.351	8.92	1.404	35.66
<b>20 AWG (26x34)</b>					
<b>8762MN</b>	1 pair	0.149	3.78	0.596	15.14
<b>8772MN</b>	3	0.159	4.04	0.636	16.15
<b>8876MN</b>	5	0.190	4.83	0.760	19.30
<b>8877MN</b>	7	0.207	5.26	0.828	21.03
<b>8878MN</b>	9	0.243	6.17	0.972	24.69
<b>8880MN</b>	12	0.273	6.93	1.092	27.74
<b>8881MN</b>	15	0.304	7.72	1.216	30.89
<b>22 AWG (19x34)</b>					
<b>8761MN</b>	1 pair	0.135	3.43	0.540	13.72
<b>8771MN</b>	3	0.144	3.66	0.576	14.63
<b>8882MN</b>	5	0.171	4.34	0.684	17.37
<b>8883MN</b>	7	0.186	4.72	0.744	18.90
<b>8884MN</b>	9	0.217	5.51	0.868	22.05
<b>8885MN</b>	12	0.244	6.20	0.976	24.79
<b>8886MN</b>	15	0.271	6.88	1.084	27.53



## Tailor-Made for Your Applications

- Internal machine wiring
- Control cabinet wiring where space is constrained
- Product lines with machines that require precise movements
- Device-to-device wiring, connecting sensors, encoders, push-buttons, actuators and more
- Enhanced protection from liquids, extreme temperatures, abrasion, chemical exposure and heavy vibration

## Individually Shielded and Overall Shield



Cable Specifications	
<b>Conductors</b>	Stranded Tinned Copper
<b>Insulation Material</b>	Polypropylene (PP)
<b>Insulation Thickness</b>	0.010 inch (0.254 mm)
<b>Shielding</b>	Individually shielded plus and overall Beldfoil® shield (100% coverage)
<b>Jacket</b>	Industrial-grade PVC
<b>Colors</b>	Intrinsically Safe Blue Yellow Gray
<b>Voltage Rating</b>	300V
<b>Temperature Range</b>	-20°C to +80°C
<b>Put-Ups</b>	100 feet (30.48 meters) 1000 feet (304.8 meters)
<b>Drain Wire</b>	Yes
<b>Min. Bend Radius</b>	4 x OD
<b>Flex Cycle Rating</b>	1 Million Flexes
<b>Approvals</b>	UL AWM Style 2937 (300 V 80C) UL AWM Style 10118 (300 V 80C) Insulated Conductors CSA FT2

Part No.	Pairs	Nominal OD		Min. Bend Radius	
		Inch	mm	Inch	mm
<b>18 AWG (41x34)</b>					
<b>8875MN</b>	2	0.290	7.37	1.160	29.46
<b>9773MN</b>	3	0.310	7.87	1.240	31.50
<b>9779MN</b>	4	0.343	8.71	1.372	34.85
<b>9780MN</b>	5	0.372	9.45	1.488	37.80
<b>9774MN</b>	6	0.439	11.15	1.756	44.60
<b>20 AWG (26x34)</b>					
<b>9402MN</b>	2	0.254	6.45	1.016	25.81
<b>9873MN</b>	3	0.271	6.88	1.084	27.53
<b>9882MN</b>	4	0.299	7.59	1.196	30.38
<b>9884MN</b>	5	0.324	8.23	1.296	32.92
<b>9874MN</b>	6	0.355	9.02	1.420	36.07
<b>22 AWG (19x34)</b>					
<b>8723MN</b>	2	0.228	5.79	0.912	23.16
<b>8777MN</b>	3	0.243	6.17	0.972	24.69
<b>8779MN</b>	4	0.268	6.81	1.072	27.23
<b>8781MN</b>	5	0.289	7.34	1.156	29.36
<b>8778MN</b>	6	0.318	8.08	1.272	32.31

Order a Sample Pack  
[Belden.com/SpaceMaker](http://Belden.com/SpaceMaker)

For over 110 years, Belden has propelled signal transmission technology forward as the world's leading manufacturer of rugged cable solutions. Learn more about our innovative products designed with your applications in mind at [www.belden.com](http://www.belden.com).

Belden, Belden Sending All The Right Signals, Hirschmann, GarrettCom, Tofino Security, Lumberg Automation, SpaceMaker and the Belden logo are trademarks or registered trademarks of Belden Inc. or its affiliated companies in the United States and other jurisdictions. Belden and other parties may also have trademark rights in other terms used herein.

Phone: 1.800.BELDEN1

[www.belden.com](http://www.belden.com)

©Copyright 2016, Belden Inc.

SPACEMAKER-CABLE-BROCHURE\_BR\_ICOS\_BDC\_0916\_A\_AG